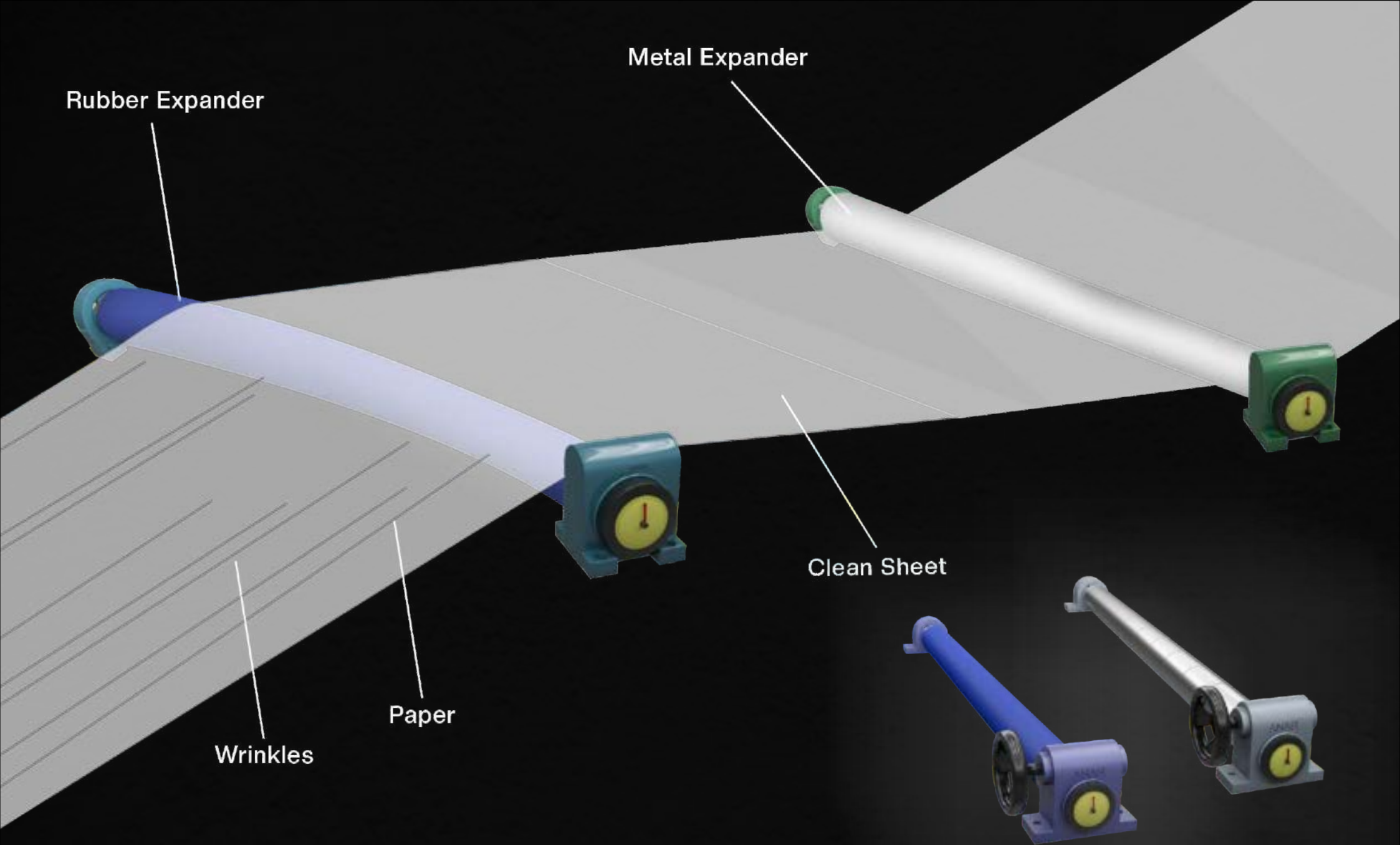




Rub Tech Private Limited

World's best
Rubber & Web-control equipments for
Paper Industries



Anar Rub Tech Pvt.Ltd

- ▶ **Anar Group of Industries. Excellence showcased globally. Anar Rub Tech - Premium Rubber and Web Solutions for the Paper Industry.**
- ▶ **Rollers, wrinkle removers, core holding devices, and endless satisfaction—this is what we manufacture. Creating smiles for our customers worldwide, we help them win over their customers. We are technically adept, harmonizing relationships with our expertise. People around the globe trust us, and in turn, we help them inspire trust in others.**
- ▶ **The major players in the paper industry, not just paper tigers, are on our client list as loyal partners, not just occasional customers.**



Anar's Team

**We Have
1000+ Clients**

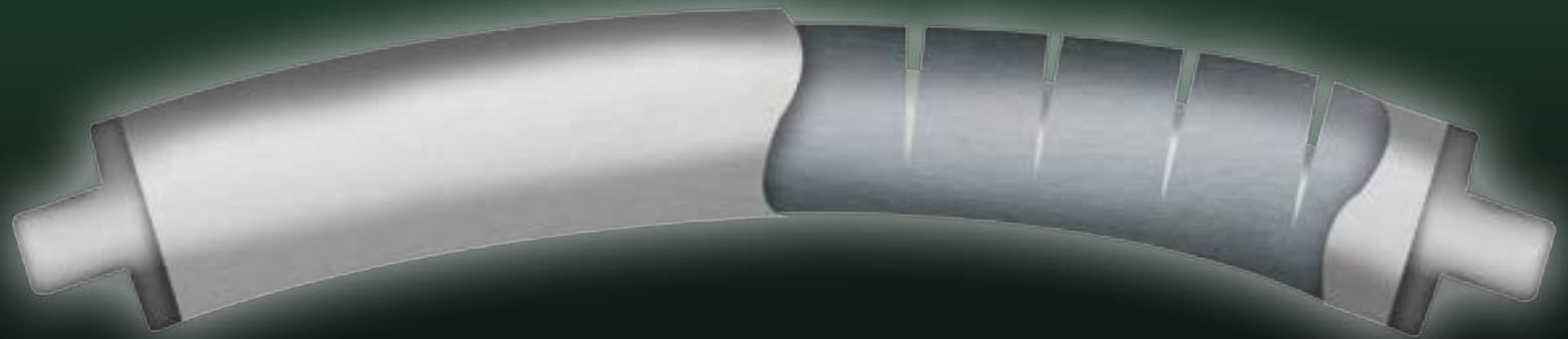
**We Have
46+ Years
Experience**



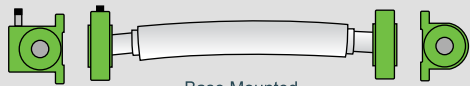
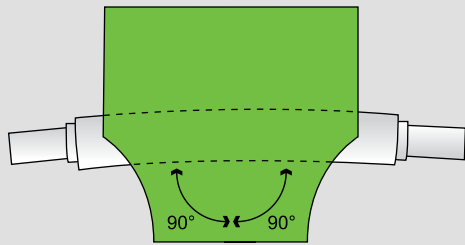
Anar Rub Tech's Class for the Paper Industry



- ▶ Rubber Expander
- ▶ Metal Expander
- ▶ Bow Roller
- ▶ Variable Bow Roll
- ▶ Teflon Sleeve Expander



Diameter up to 300mm, Length up to 8000mm



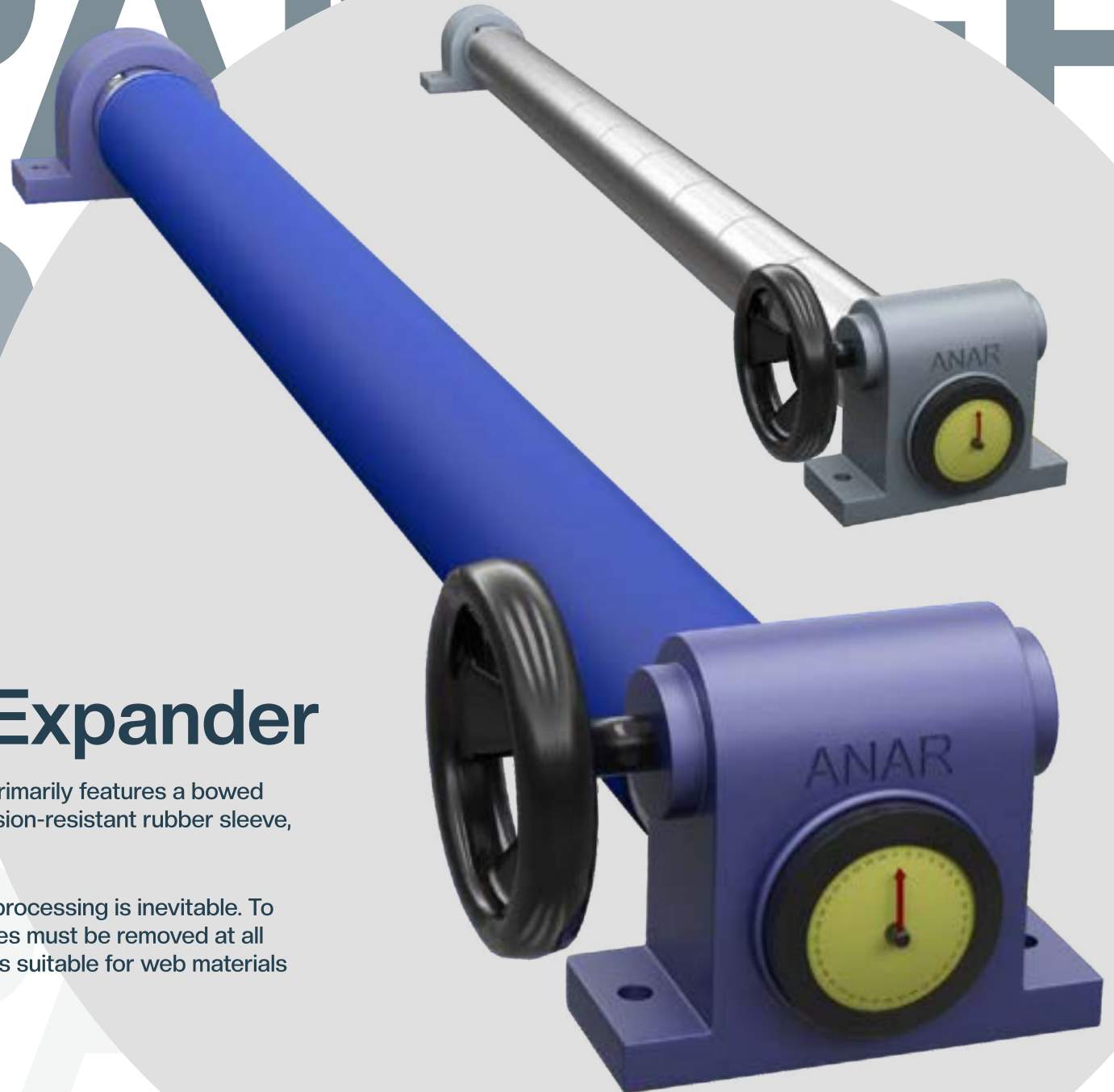
Base Mounted

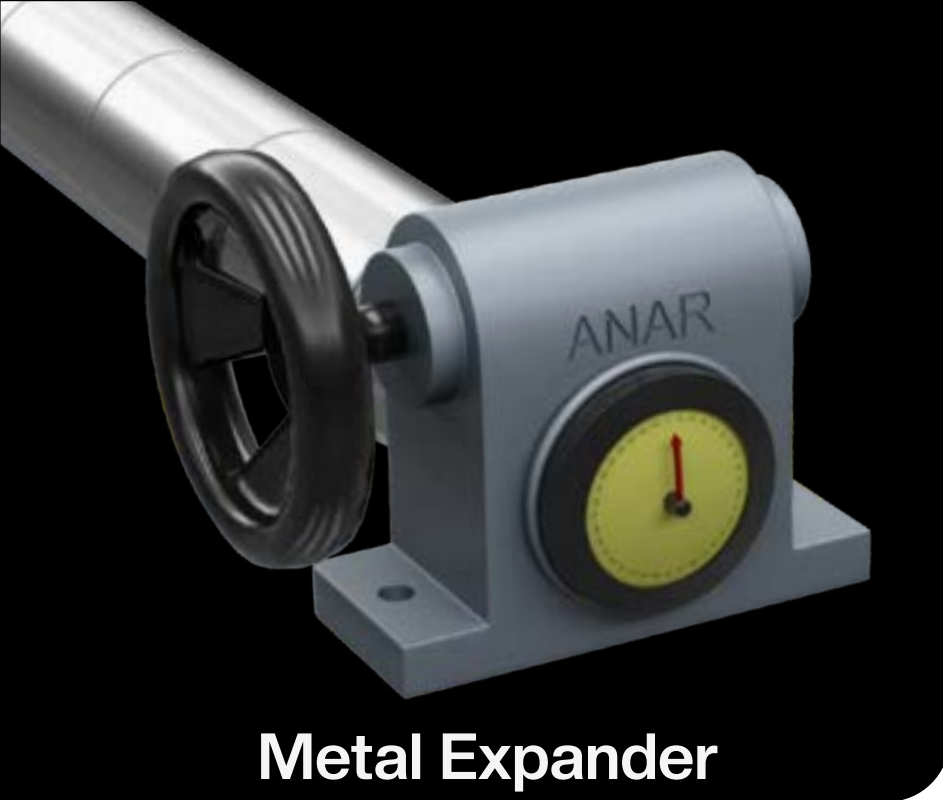


Wall Mounted

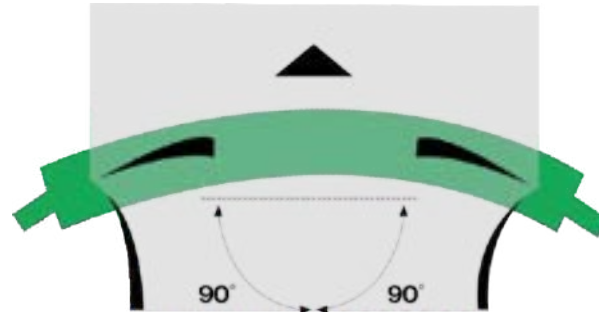
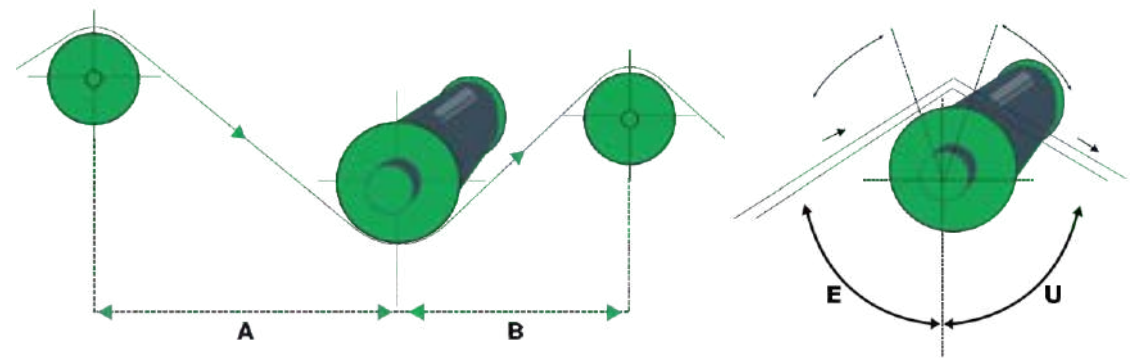
Rubber & Metal Expander

- ▶ This is the most popular wrinkle remover device. It primarily features a bowed shaft, metal segments, sealed ball bearings, an abrasion-resistant rubber sleeve, or hard chrome plating, among other components.
- ▶ Wrinkle formation at any stage of manufacturing or processing is inevitable. To prevent inferior quality and rejection of webs, wrinkles must be removed at all necessary steps-a wide range of anti-crease devices suitable for web materials and processes.



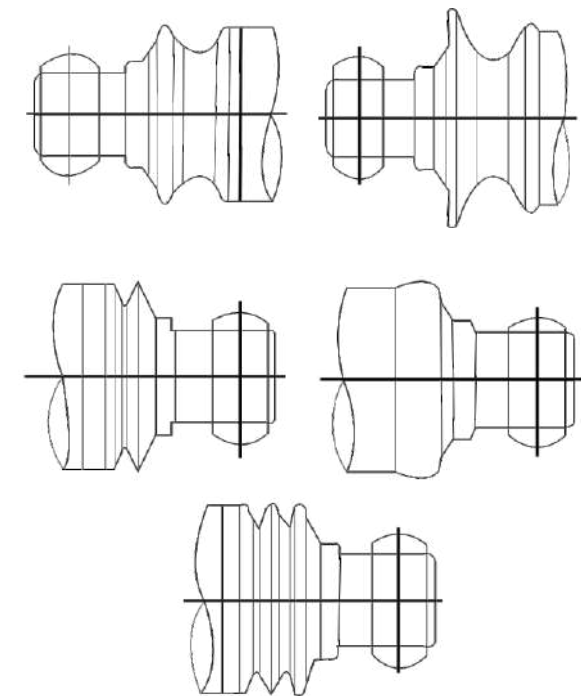
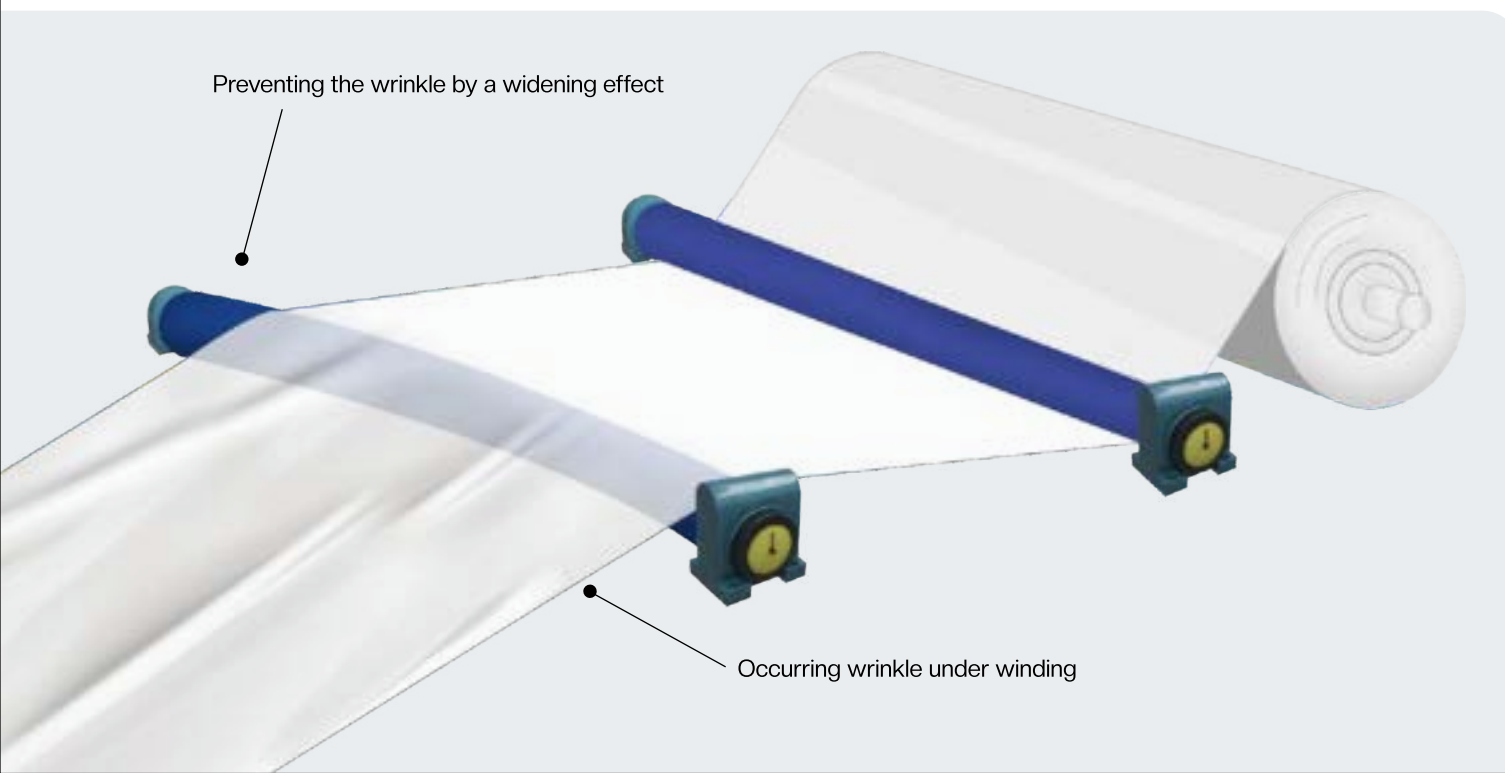


Metal Expander



To reduce wrinkles, the spreading effect should be minimized by taking into account the following three main factors:

- 1 The contact arc between the web and the spreader roller should be increased.
- 2 The gap between the spreader and the subsequent roller must be decreased to prevent the formation of new wrinkles.
- 3 Bow of the roller



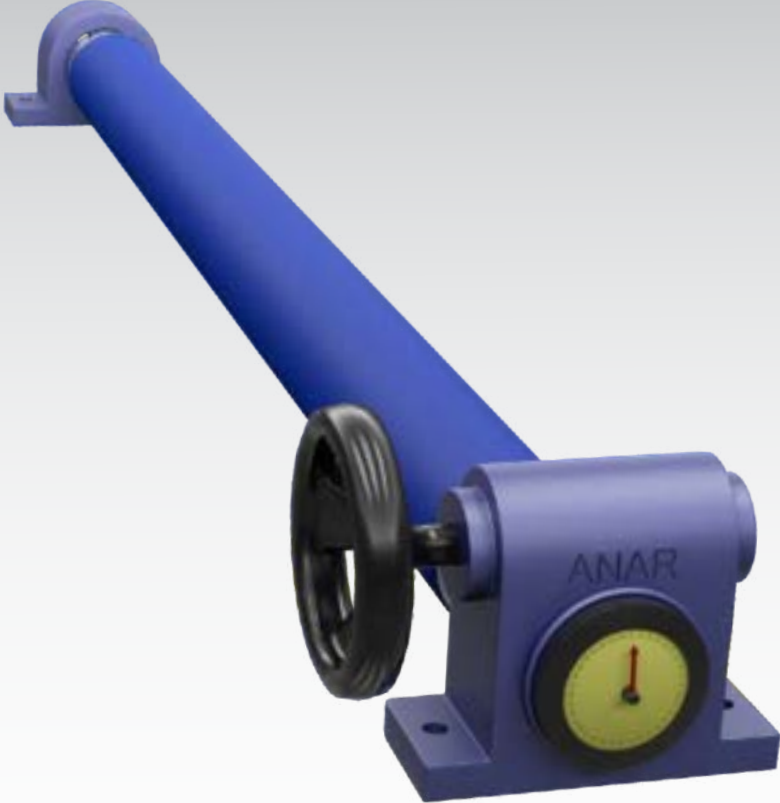
Metal Expander



- Offers superior durability and rotational precision.
- Best suitable for Paper Industry applications
- Easier to clean compared to rubber EXP.
- Excellent conductivity for preventing static electricity.



Rubber Expander



- Achieves optimal results with a fixed bow.
- Suitable for film, paper, metal foil, textile, and other sheet products.
- Available in various types of rubber
(abrasion-resistant, chemical-resistant, heat-resistant, water-resistant, conductive, etc.)
- More effective at spreading wrinkles compared to flat expander rolls.



Variable Bow Rollers



Leading Manufacturer and Supplier of Variable Bow Rollers

- ▶ Engineered to address web material wrinkling, this product finds application in multiple process sections, including dryers, presses, wire sections, and coating units.
- ▶ To enhance operational efficiency, the bow mechanism utilizes a combination of mechanical and hydraulic adjustment systems for precise tensioning and alignment.

Application

- ▶ To free the web material from the wrinkles.

Industry

- ▶ Packaging, Paper, Textile

Unique Features

- ▶ Superior bow mechanism
- ▶ Bow adjustment using a hydraulic and mechanical procedure Simple to use.
- ▶ Sturdy
- ▶ Protected against abrasion
- ▶ able to withstand deterioration
- ▶ uniform surface

Rubber Roller For Paper Industry

► Anar Rub Tech manufactures spreader rollers for paper and other application industries, and has been producing rubber/ebonite rollers for textile, converting, plywood, tire, and other industries since 1978.

► Rollers are essential for web process control. ANAR RUB TECH manufactures a wide range for various applications and materials.

- Press Roller
- Felt Guide Roller
- Press Guide Roller
- Couch Roller
- Guide Roller
- Size Press Roller
- Lump Break Roller
- Bottom Press Roller

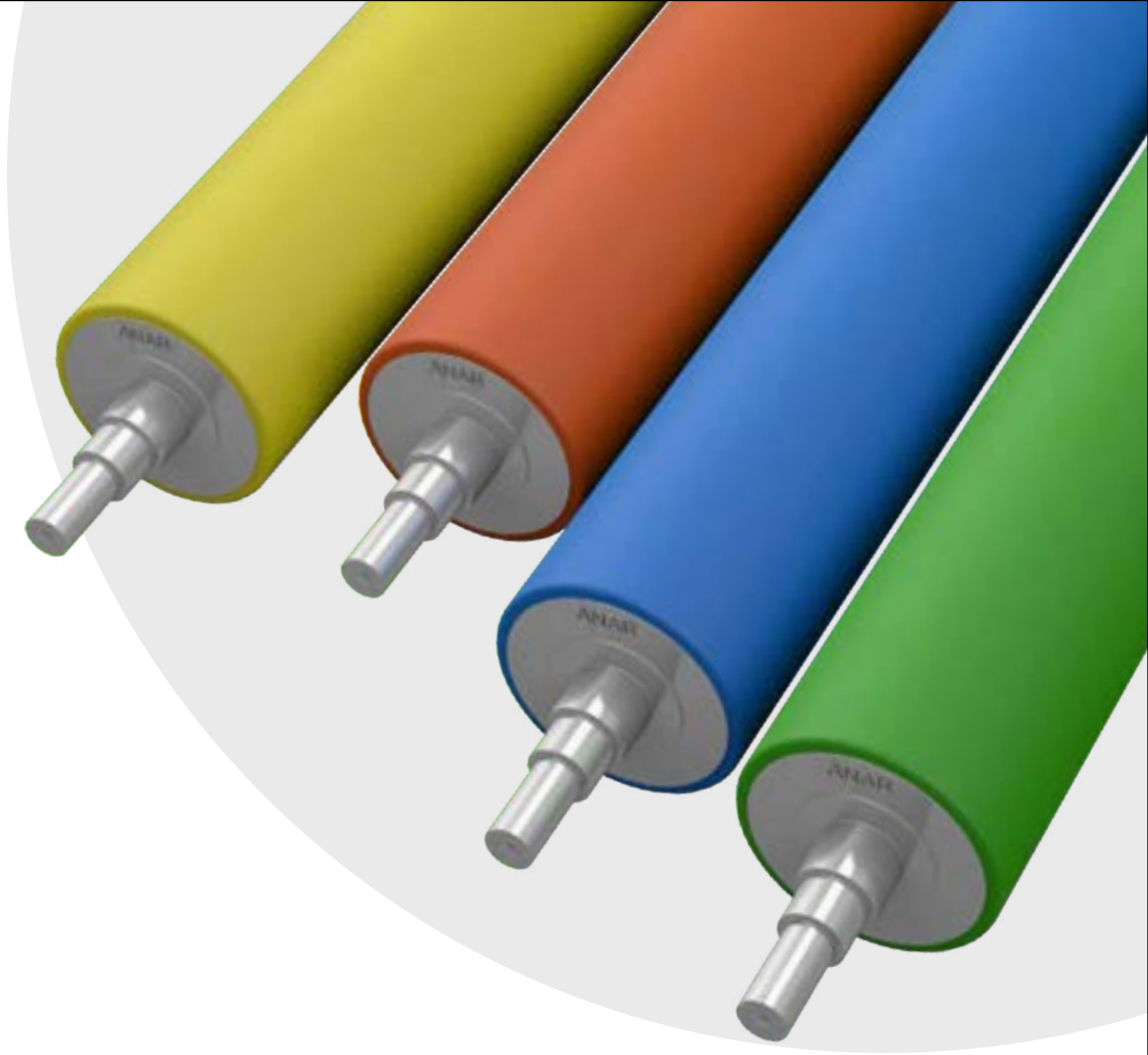
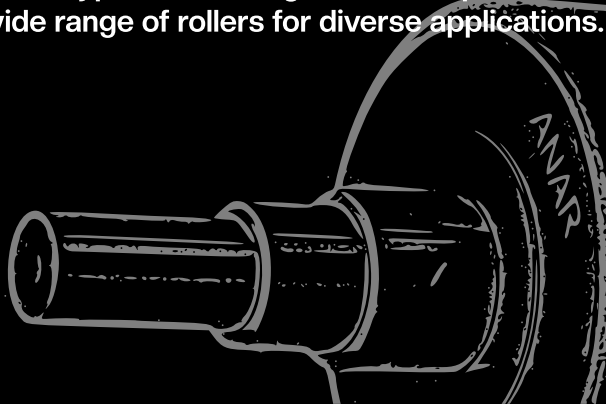


Warm /Felt Rubber Roller

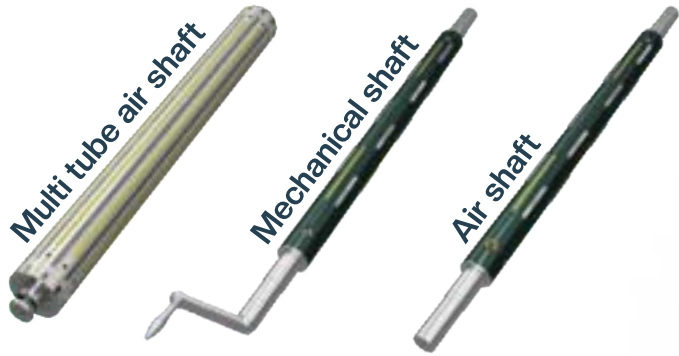
- Rollers are crucial for web process control. An even surface, appropriate coating material, uniform hardness, and precision workmanship are vital for roller performance. The type and coating material depend on the application and web material. 'Anar Rub Tech' produces a wide range of rollers for diverse applications.

Types of Rollers

- Printing/Impression Furnishing Rollers.
- Cork Rollers.
- Diamond Grooved Rollers.
- Film Plant Rollers(Nip Rollers, Drum Rollers, Transport Rollers).
- Lamination Rollers (Extrusion Lamination, Solvent less Solvent Base Lamination).



Core Holding Devices



Air Expandable Shaft

- ▶ A widely utilized shaft features a slotted pipe, customized journals for the user's machine, lugs, a rubber bladder, and a non-return valve.
- ▶ These shafts are ideal for both unwinding and winding operations. They can handle single or multiple cores with a width greater than 150 mm. The choice of pipe and lug materials depends on factors such as load, speed, and core material. However, they cannot accommodate gauge variations or individual core speed variations due to the lack of slippage, and they are not suitable for core widths less than 150 mm.

Sizes

- ▶ Suitable for Core I.D. dia 3,4,6,8" (metric size and special sizes also available) Lengths as required.



Safety Chucks

- ▶ Safety chucks are used at the winding or unwinding position. It safe loading/unloading time. As the driving mechanism (sprocket) does not need to be removed every time while charging the core holding shaft, it gives maintenance-free working. Safety Chucks run with total safety due to cart mechanisms.

Types of Safety Chuck

- ▶ Light Duty upto 500 kg.
- ▶ Tilting Type, Sliding Type.
- ▶ Heavy Duty upto 2000 kg.

Unique features

- ▶ All accessories are manufactured in CGS and FPS sizes. 1", 1.25" 1.5", 2" (Metric Sizes also available). Other sizes as required.

Mechanical Expandable Shaft (Bladderless shaft)

- ▶ This is a lug-type shaft where core holding is mechanically initiated rather than pneumatically. The shaft primarily includes a slotted pipe, steel lugs, a brass cam, and a ratchet.
- ▶ The shaft can handle any challenges posed by heavy loads and high speeds. This capability is due to the positive gripping and core centering achieved effortlessly through the cam/lug design. It is particularly advantageous for cores with uneven inside diameters. The key and Allen cap bolt prevent any shearing of the journal pipe assembly.

Sizes

- ▶ Suitable for Core I.D. 3" and 6" Length as per requirement



Air Chuck

- ▶ Air chuck is the product which is use to wind a material by using different size of core on specify base shaft. It's a product which is use for changeover of core size. It's available in different size of through bore inside for holding on a shaft.

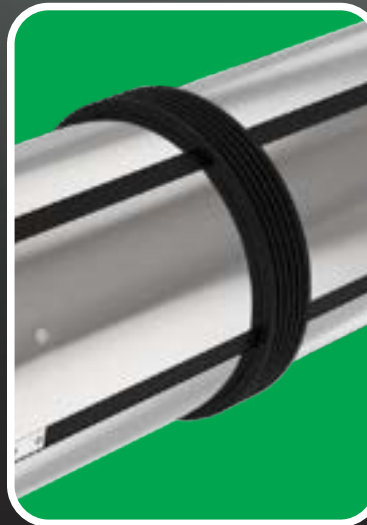
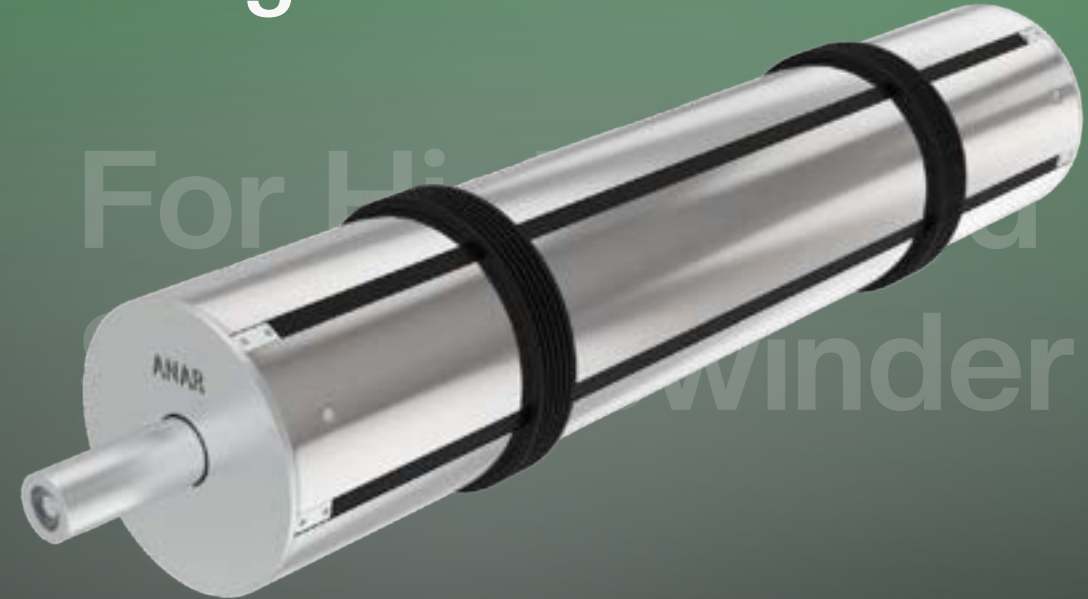
Unique Features

- ▶ Low maintenance
- ▶ Sturdy design
- ▶ 100% leak-proof design
- ▶ Quick changeover

Sizes

- ▶ Compatible with both 3" and 6" core diameters.

Bottom Cutting Knife Holding Shaft



- Pneumatically Operated
- Reduces change over time
- Reduces setting time
- Operator friendly design
- Achieves perfect paper width in high speed Slitter Rewinder
- Proven performance Working efficiently in leading paper mills

A groundbreaking product from the experts at Anar Rub Tech.

Core Lifter



- ▶ The Vertical Core Lifter's robust design allows for efficient handling and transport of heavy rolls, suspended from overhead cranes or hoists.
- ▶ The quality-focused range of Vertical Core Lifter is being utilized in different industries, including Packaging and Paper.

Specifications

- ▶ Size – 3" and 6" inches

Application

- ▶ Utilized to move rolls to pallets, trolleys, and carts

Core Saver



- ▶ Our Core Saver, also known as Recor or Core Restorer, is designed to quickly transform damaged, collapsed, or distorted cores into perfect 360-degree shapes in just a few minutes.
- ▶ With innovation and research at the forefront, our custom-made Core Saver efficiently restores mishandled cores, meeting the specific needs of industries like packaging and plywood.

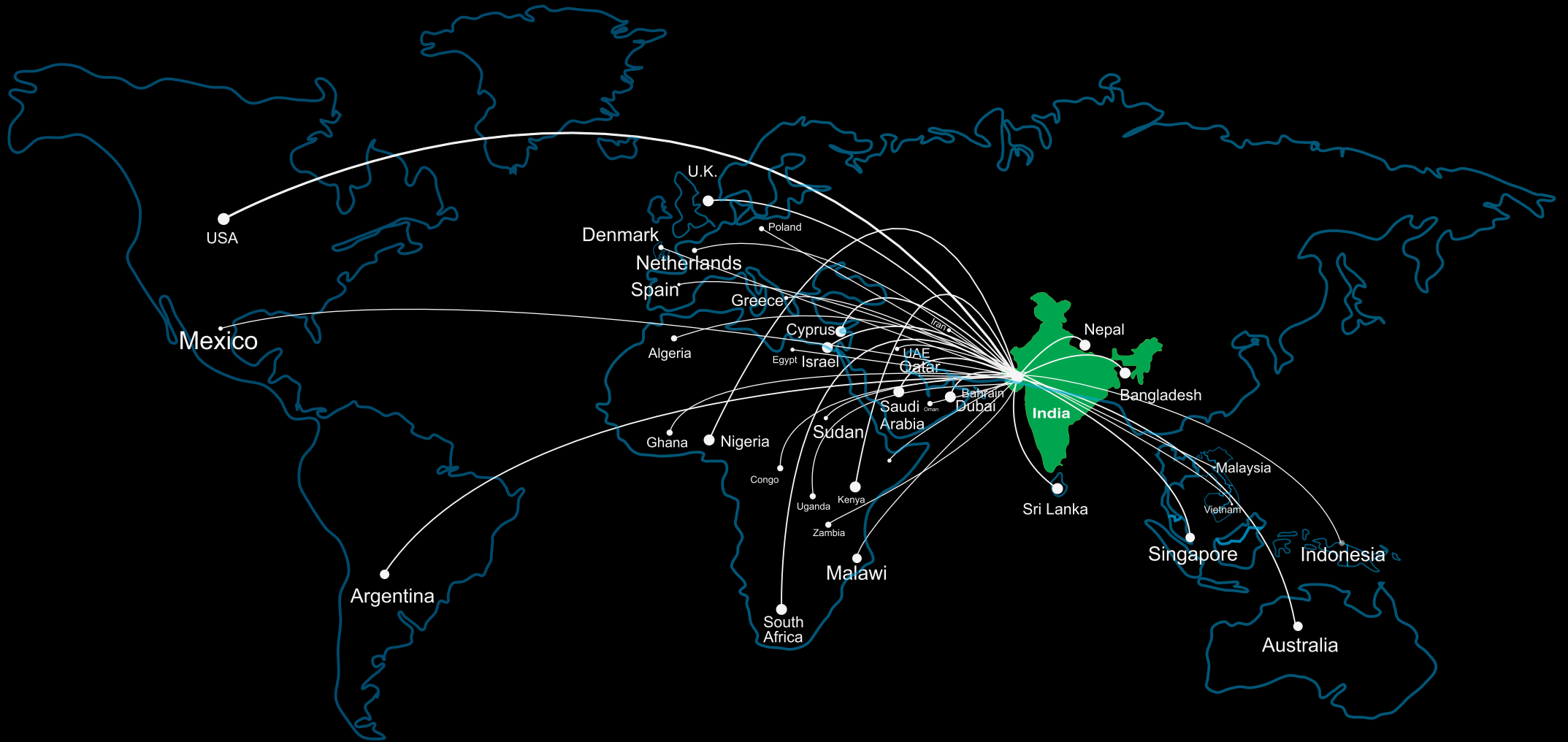
Application

- ▶ For restoration of core size – 3" inches
- ▶ Load capacity – 10, 150 PSI (700 bar)

Our Valuable Customers



Since 1978



No.7, Panchal Industrial Estate, Near S.B.I.,
Bapunagar, Ahmedabad, Gujarat, India - 380024.

Phone:- +91 99133 35265 / 79 2274 3428 / 79 2277 3428

E:- info@anarrubber.com W:- www.anarrubber.com

