

# IT6000 Series HMI

## 2nd Generation High Performance

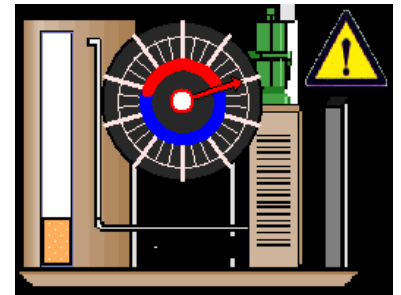
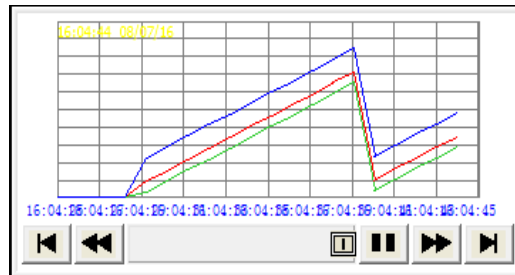
### Features & Functions

- 7.0" and 10.1" inches models
- High resolution display: 800 x 480
- Up to 8 different languages can be downloaded into the HMI
- Languages supported on the HMI include English, Japanese, Russian, Thai etc.
- Maximum of 3 Serial ports and 1 Ethernet port
- USB device port: Firmware & Program, History data download/upload to/from PC
- USB host port: Access to U-disk, mouse, keyboard, printer etc
- User Memory: 128 MB Flash & 128MB DDR3 SDRAM
- Supports Ethernet(MODBUS-TCP), RS485/RS422/RS232 (MODBUS-RTU)
- Security: 12 passwords, 12 users, 6 level authority
- InoTouch Editor Functions:
  - Extensive gallery/icons
  - Offline & Online Simulation
  - Recipe data import & export
  - Data sample
  - Trend chart display

**NEW**

Easy debugging: user can debug the PLC without disconnecting the cable between HMI and PLC, cable between PC and HMI, which saves time

Operation in high ambient temperature  
 55°Cavg



**NEW**

In-built multiple communication ports including Ethernet, Serial, USB ports, supporting program download/upload via USB/Ethernet ports

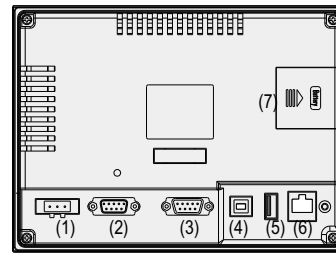
PC-Based Software-InoTouch Editor easy programming tool



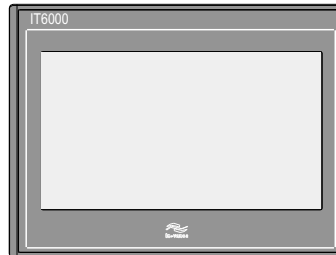
## General Specifications

HMI Model		IT6070T	IT6070E	IT6100E
Dimension	Height	[H] : 146 mm		[H]: 213mm
	Width	[W] : 200 mm		[W]: 271mm
	Depth	[D] : 42 mm		[D]: 40mm
Power Supply		24VDC(± 20%)		
Battery		Lithium, 3.0V-210mAh		
Display Section	Screen Size	7.0"		10.1"
	Resolution	800x480		1024x600
	Display Color	2 <sup>24</sup> color		
	Backlight Adjustment	Standard		
	Backlight Source	LED		
	Backlight Life	30000hrs		
User Memory	Flash	128MB		
	SDRAM	128MB DDR3		
	Recipe Storage	256KB		
In-built Port	Serial Port	COM1(RS422/RS485)	COM1(RS422/RS485), COM2(RS232), COM3(RS485)	
	Ethernet Port	N/A	RJ45	
	USB(Host)	Type A		
	USB(Device)	Type B		

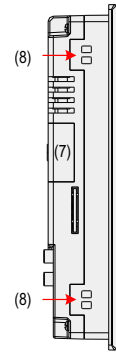
## Product Layout



Back View



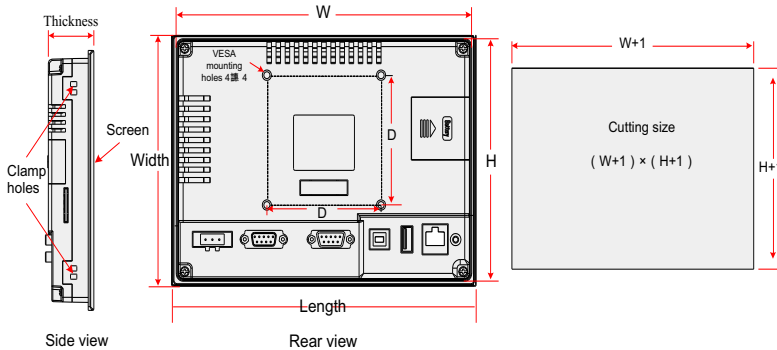
Front View



Side View

Terminal No.	Terminal Name	Terminal No.	Terminal Name
(1)	Power port	(2)	COM1/COM3 Serial port(DB9 female)
(3)	COM2 Serial port(DB9 male)	(4)	USB device(Type B)
(5)	USB host(Type A)	(6)	Ethernet port(RJ45)
(7)	Battery cover	(8)	Clamp hole

## Dimension



HMI Model	Display Screen Size	Product Specifications		Recommended Screw Hole Size	
		Dimensions Length x Width x Thickness (mm)	NEMA 4 Mounting W x H (mm)	W + 1 (mm)	H + 1 (mm)
IT6070T	7.0"	200 x 146 x 42	191 x 137	192	138
IT6070E					
IT6100E	10.1"	271 x 213 x 40	258 x 200	259	201

## Accessories List

Model	Function description	Part no.
IT5-USB-CAB	The common programming cable of the HMI is USB programming cable with one end of Type A male and the other end of Type B male, length of 2m	15041123
IT5-H2U-CAB	HMI-PLC communication cable, connection of HMI to Inovance PLC, the port of the cable is DB9 male, length of 3m	15041140

For more information, please contact our local offices.



**Hong Kong SAR**  
**Inovance Automation Co., Limited**  
 International Export Office  
 Tel : (852) 2751 6080  
 Fax : (852) 2751 6933  
 info@inovance-automation.com  
[www.inovance-automation.com](http://www.inovance-automation.com)

**Italy - Milan**  
**Inovance Automation Italy Srl**  
 Tel : (39) 02 2682 2318  
[info@inovance-automation.com](mailto:info@inovance-automation.com)

**India:**  
**Inovance Automation Pvt. Ltd.**  
 Head Office Chennai  
 Tel : (91) 44 4380 0201  
 Ahmedabad Tel : (91) 79 4003 4274  
 Mumbai Tel : (91) 90 0496 0595  
 New Delhi Tel: (91) 99 9092 8961  
[info.inovaindia@inovance-automation.com](mailto:info.inovaindia@inovance-automation.com)

**Turkey - Istanbul**  
**Inovance Automation Türkiye**  
 Tel : (90) 216 706 1789  
[info.turkey@inovance-automation.com](mailto:info.turkey@inovance-automation.com)