

# H3U Series PLC

## Higher Performance with Motion Control

### Features & Functions

- All-in-one CPU and power supply supporting local and remote I/O
- Basic instruction: 100ns/instruction
- Program capacity: 64K steps  
 Device memory  
   Auxiliary Relays 9216 points  
   Timers 512 points  
   Counters 256 points  
   Data Registers 9552 points  
   File Registers 32768 points
- High-speed inputs: up to 200kHz
- High-speed outputs: up to 500kHz
- Three-axes electronic cam(only high-end motion model)
- Standard motion: two-axes circular and point to point interpolated
- High-end motion: three-axes point to point interpolated and spiral curve
- Supports Ethernet(MODBUS TCP), RS485(MODBUS-RTU), CANopen, CANlink(Inovance authorized) communication
- Maximum of 192 digital I/O(local), 24 analog I/O(local), 7936 digital I/O(remote), 1488 analog I/O(remote)
- Programming language conforms to IEC61131-3:
  - Ladder Diagram(LD)
  - Instruction List(IL)
  - Sequential Function Chart(SFC)

**NEW**

Up to three-axes electronic cam, more flexible and easy setup



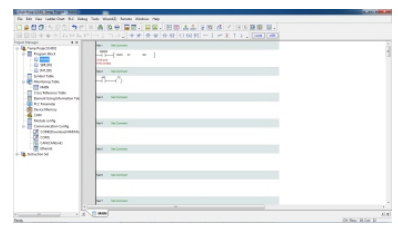
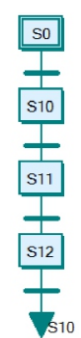
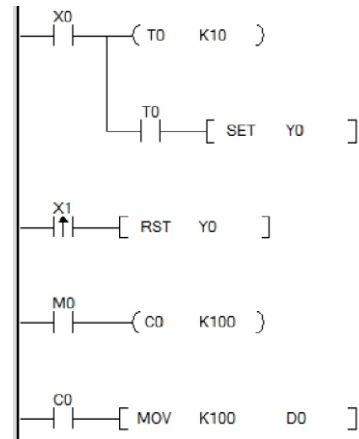
**NEW**

In-built multiple communication ports including Ethernet, Serial, USB ports, supporting program download/upload via USB/Ethernet ports

Operation in high ambient temperature  
 55°C avg

```

LD      X0
OUT     T0 K10
AND
SET     Y0
LDP
RST     Y0
LD      M0
OUT     C0 K100
LD
MOV     K100 D0
  
```



PC-Based Software-InoTouch Editor  
 easy programming tool

## General Specifications

PLC Model		H3U-1616MT-XP	H3U-1616MR-XP	H3U-3232MT	H3U-3232MR	H3U-0808PMRTA
Category		Standard motion <sup>[5]</sup>				High-end Motion <sup>[6]</sup>
Dimension	Height	[H] : 90 mm			[H] : 90 mm	
	Width	[W] : 170 mm			[W] : 230 mm	
	Depth	[D] : 90 mm			[D] : 95 mm	
Local extension I/O		See local extension modules on page 4				
Remote extension I/O		See remote extension modules on page 4				
Power Supply		85~264VAC				
In-built Inputs	Total inputs	16	16	32	32	8 <sup>[1]</sup>
	High-speed inputs	8x200kHz	8x200kHz	8x200kHz	8x200kHz	3x200kHz <sup>[2]</sup>
In-built Outputs	Total outputs	16	16	32	32	8 <sup>[3]</sup>
	High-speed outputs	5x200kHz	N/A	5x200kHz	N/A	3x500kHz <sup>[4]</sup>
	Output Type	Transistor(NPN)	Relay <sup>[7]</sup>	Transistor(NPN)	Relay <sup>[7]</sup>	4 x Relay <sup>[7]</sup> 4 x Transistor(NPN)
In-built Ports	Serial Port	COM0(RS422/RS485), COM1(RS485), MODBUS-RTU, DB9				
	CAN Port	CANopen/CANlink				
	Ethernet Port	MODBUS-TCP, RJ45				
	USB(Device)	Mini-B				

Note:

[1] 8 inputs=X0~X7, normal inputs

[2] 3 x 200kHz = 3-channel A/B phase differential high-speed inputs

[3] 8 outputs=Y0~Y7, normal outputs

[4] 3 x 500kHz = 3-channel differential high-speed outputs

[5] Supports two-axes circular and point to point interpolated

[6] Supports three-axes point to point interpolated and spiral curve

[7] Maximum output current:

Resistive load: 2A/1 point; 8A/4 point common terminal; 8A/8 point common terminal

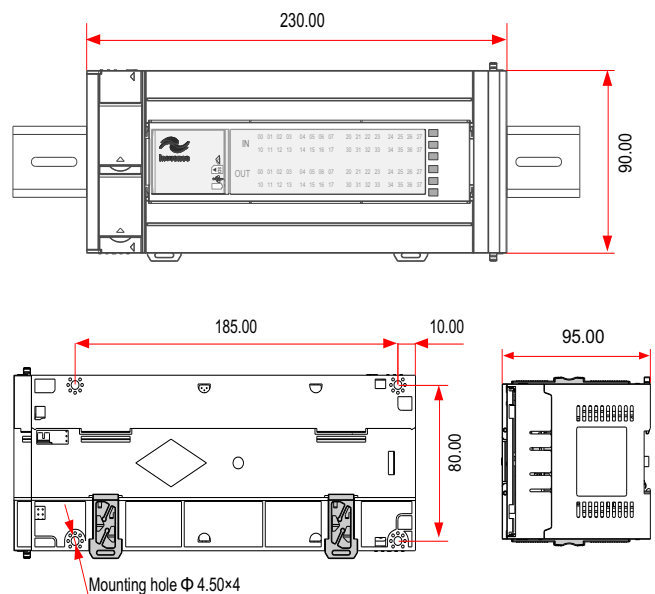
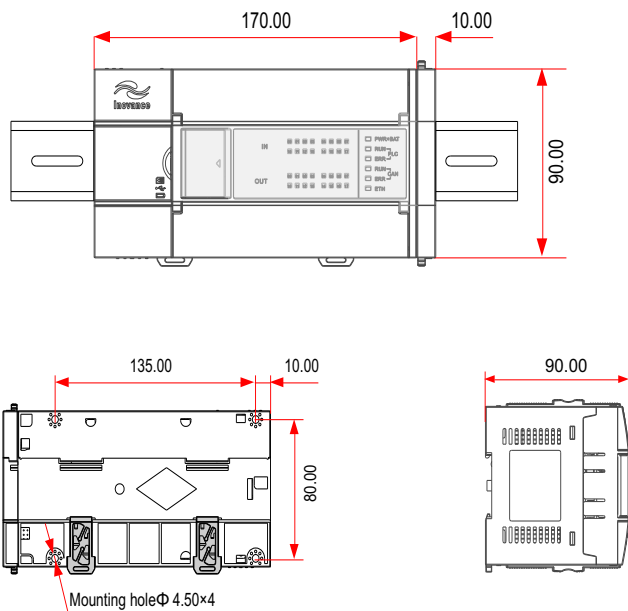
Inductive load: AC220V, 80VA

Lamp load: AC220V, 100W

## Dimensions

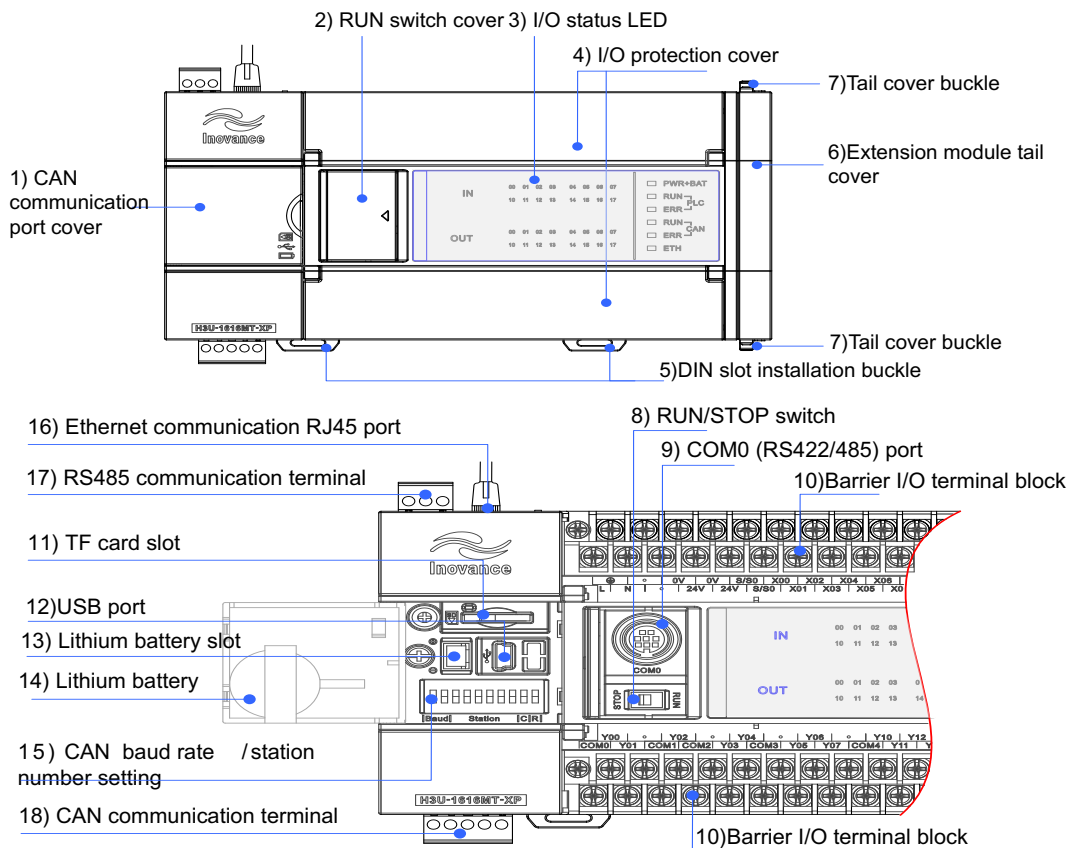
H3U-1616MT/R-XP (Unit: mm)

H3U-3232MT/R or H3U-0808PMRTA (Unit: mm)

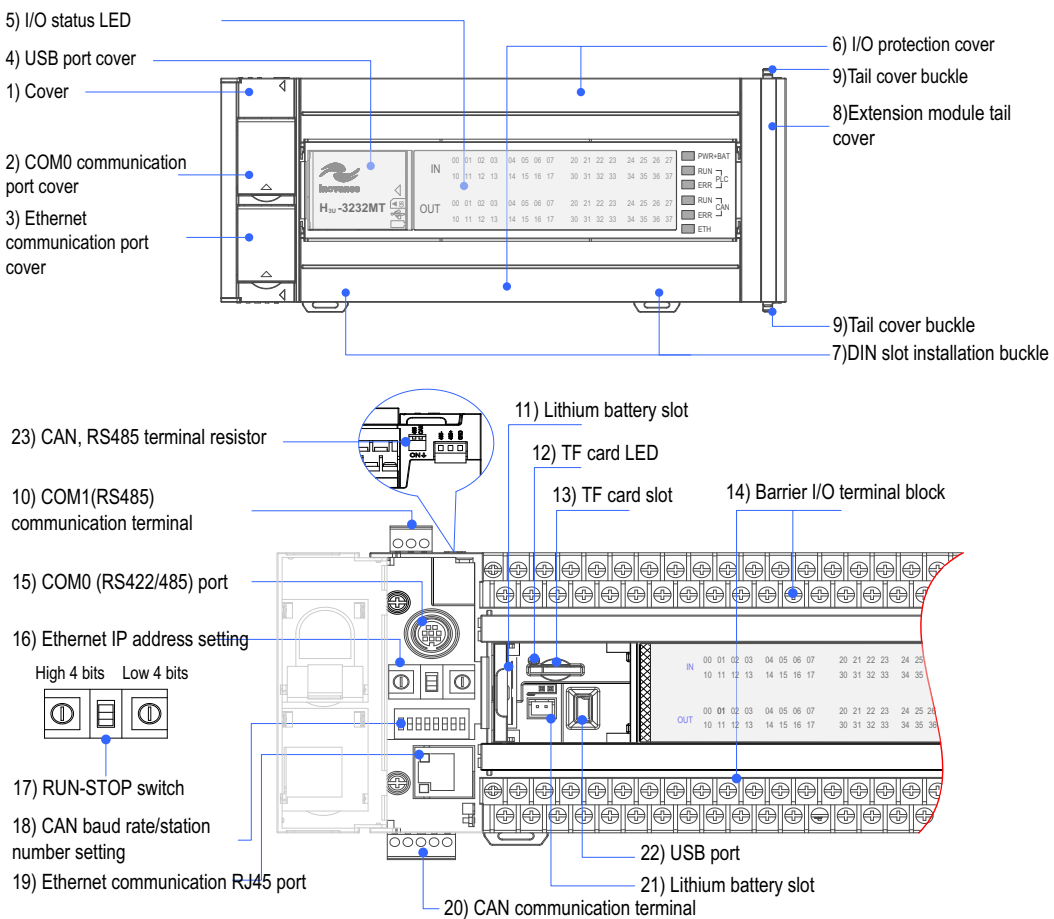


# Product Layout

## H3U-1616MT/R-XP



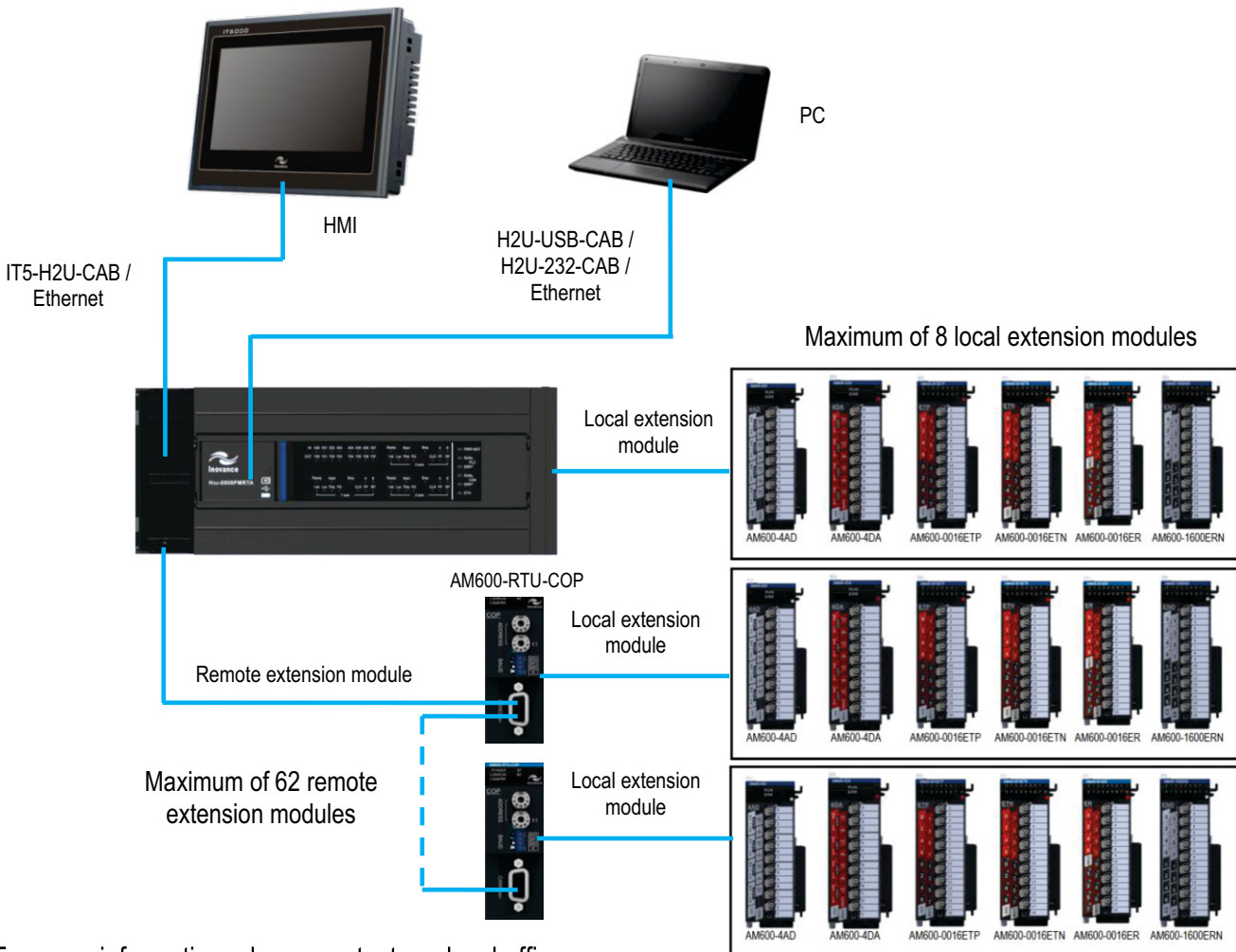
## H3U-3232MT/R or H3U-0808PMRTA



## Accessories List

Part name	Model	Function description	Part no.
Extension Module	AM600-1600END	PLC extension module, 16 inputs, input voltage: 24VDC, sink/source mode	01440005
	AM600-0016ETP	PLC extension module, 16 outputs, PNP transistor, maximum current: 500mA@24VDC	01440003
	AM600-0016ETN	PLC extension module, 16 outputs, NPN transistor, maximum current: 500mA@24VDC	01440018
	AM600-0016ER	PLC extension module, 16 outputs, relay, rated current: 2A@250VDC	01440017
	AM600-4AD	PLC extension module, 4 analog inputs, resolution: 16bit, error precision: 0.1%	01440005
	AM600-4DA	PLC extension module, 4 analog outputs, resolution: 16bit, error precision: 0.1%	01440007
	AM600-RTU-COP	CANopen slave communication module, maximum of 16 extension I/O module	01440011
Cable	H2U-232-CAB	PLC program download cable, connection of PC to Inovance PLC, the port of the cable is DB9 female, length of 2m	15042148
	H2U-USB-CAB	PLC program download cable, connection of PC to Inovance PLC, the port of the cable is mini USB, length of 1.5m	15041200
	IT5-H2U-CAB	HMI-PLC communication cable, connection of HMI to Inovance PLC, the port of the cable is DB9 male, length of 3m	15041140
	S6-L-T04-0.3	Reticle, length of 0.3m, speed of up to 100Mbps, STP	15040261
	S6-L-T04-3.0	Reticle, length of 3.0m, speed of up to 100Mbps, STP	15040262
Battery	H2U-BAT	Battery for Inovance PLC, length of 55mm	01023010

## H3U Series PLC System Configuration



For more information, please contact our local offices.



**Hong Kong SAR**  
**Inova Automation Co., Limited**  
 International Export Office  
 Tel : (852) 2751 6080  
 Fax : (852) 2751 6933  
 info@inova-automation.com  
[www.inova-automation.com](http://www.inova-automation.com)

**Italy - Milan**  
**Inova Automation Italy Srl**  
 Tel : (39) 02 2682 2318  
[info@inova-automation.com](mailto:info@inova-automation.com)

**India:**  
**Inova Automation Pvt. Ltd.**  
 Head Office Chennai  
 Tel : (91) 44 4380 0201  
 Ahmedabad Tel : (91) 79 4003 4274  
 Mumbai Tel : (91) 90 0496 0595  
 New Delhi Tel : (91) 99 9092 8961  
[info.inovaindia@inova-automation.com](mailto:info.inovaindia@inova-automation.com)

**Turkey - Istanbul**  
**Inova Automation Türkiye**  
 Tel : (90) 216 706 1789  
[info.turkey@inova-automation.com](mailto:info.turkey@inova-automation.com)